

### State Membership Conference

Every four years one of the Districts hosts a Statewide Membership Conference on a rotation basis. It is an important time for fellow BWA members to bond with one another and enjoy the conference program. This Conference is held in the year prior to the Buddhist Women's World Convention.

### Buddhist Women's World Convention

The Buddhist Women's World Convention is held every four years. The five World Federation Districts are Japan, Hawaii, Buddhist Churches of America, Jodo Shinshu Buddhist Temples of Canada, and South America. Members in these Districts attend this Convention to share information, to unite in spirit and purpose, to strengthen our beliefs in Jodo Shinshu, and to promote world peace.



*For more information to be a BWA member, please contact your Hongwanji temple*

#### HONOLULU

- Honpa Hongwanji Hawaii Betsuin 536-7044, 7045
- Jikoen Hongwanji Mission 845-3422
- Moiliili Hongwanji Mission 949-1659

#### OAHU

- Aiea Hongwanji Mission 487-2626
- Ewa Hongwanji Mission 681-5222
- Kapolei Buddhist Sangha c/o 672-5151
- Mililani Hongwanji Temple 625-0925
- Pearl City Hongwanji Mission 455-1680
- Wahiawa Hongwanji Mission 551-7111
- Waialua Hongwanji Mission c/o 637-4655
- Waianae Hongwanji Mission 265-8948
- Waipahu Hongwanji Mission 677-4221

#### KAUAI

- Kapaa Hongwanji Mission 822-4667
- Lihue Hongwanji Mission 245-6262
- West Kauai Hongwanji Mission
- Hanapepe Hongwanji Temple 335-3195
- Waimea Hongwanji Temple 338-1537

#### MAUI

- Kahului Hongwanji Mission 871-4732
- Lahaina Hongwanji Mission 661-0640
- Lanai Hongwanji Mission 565-6815
- Makawao Hongwanji Mission 572-7229
- Wailuku Hongwanji Mission 244-0406

#### HAWAII

- Honpa Hongwanji Hilo Betsuin 961-6677
- Honohina Hongwanji Mission c/o 345-6869
- Honokaa Hongwanji Mission 775-7232
- Honomu Hongwanji Mission 963-6032
- Kamuela Hongwanji Mission 885-4481
- Kohala Hongwanji Mission c/o 775-7232
- Kona Hongwanji Mission 323-2993
- Naalehu Hongwanji Mission c/o 966-9981
- Paauilo Hongwanji Mission 776-1369
- Pahala Hongwanji Mission 928-8254
- Papaaloa Hongwanji Mission 962-6340
- Papaikou Hongwanji Mission 964-1640
- Puna Hongwanji Mission 966-9981



## HONPA HONGWANJI MISSION OF HAWAII

## HAWAII FEDERATION OF BUDDHIST WOMEN'S ASSOCIATIONS

1727 Pali Highway  
Honolulu, HI 96813

Website: [www.hawaiiibwa.org](http://www.hawaiiibwa.org)

Facebook:

[www.facebook.com/hawaiiibwa](http://www.facebook.com/hawaiiibwa)



**Name**

The Hawaii Federation of Buddhist Women’s Associations is an affiliate organization under the Honpa Hongwanji Mission of Hawaii.

**Purpose**

1. To unify and cooperate with all United Honpa Hongwanji BWA in the State of Hawaii;
2. To perpetuate and expand Jodo Shinshu (Pure Land Sect) in the State of Hawaii.
3. To promote the development of Buddhist women’s organizations; and
4. To participate in the promotion of Buddhism throughout the world and to work for world peace.

**Buddhist Women’s Pledge**

As a person of Buddhist faith, I will follow Shinran Shonin who sought to live the life of truth: appreciate fully the blessing of human existence; thoroughly hear the Primal Vow of the Buddha, and diligently strive to live the life of Nembutsu as a Buddhist woman.

- Earnestly listening to the teaching, I will live my daily life embraced in Amida’s Light.
- Building a home fragrant with the Nembutsu, I will nurture a child of the Buddha.
- Following the teaching of “One World,” I will spread the circle of Dharma friends.

**Organizational Chart**

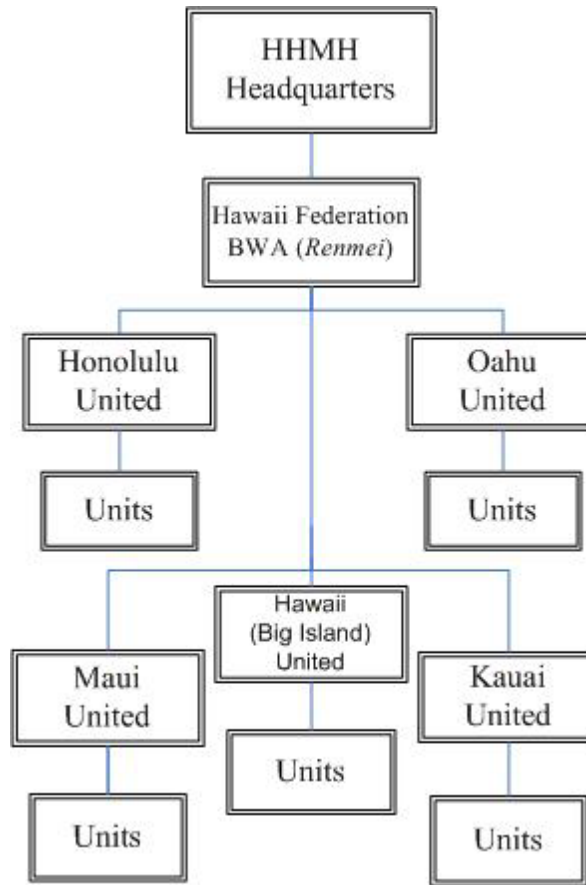
Honpa Hongwanji Mission of Hawaii,  
Headquarters

Hawaii Federation of Buddhist Women’s  
Associations (*Renmei*)

United Districts (*Rengo*)

Honolulu, Oahu, Hawaii (Big Island), Maui,  
Kauai

Units (individual temples)



**Programs**

*Propagation of Jodo Shinshu teachings and promotion of world peace.*

**Buddhist Education**

Buddhist traditions, altar arrangements, music, health care, current events, etc., are some of the subjects in our annual workshops and seminars.

**Student Exchange**

BWA sponsors the popular Student Exchange Program every year. Students 17-23 years of age apply for a chance to spend two weeks in Japan every other year. For alternating years Japan students get to spend time in Hawaii, exchanging fellowship and goodwill.

**Dana Day**

Dana Day was one of the first resolutions approved at the 2<sup>nd</sup> World Buddhist Women’s Convention in New York City in 1965. Dana Day collections are made to charitable and social welfare agencies in respective countries.

**Eshin-ni and Kakushin-ni**

Lady Eshin-ni is our founder Shinran Shonin’s wife. Kakushin-ni is their daughter. Each year, on or around April 25, a special religious service is held in honor of both and a contribution is made to a youth organization of the temple.

**Sister District Relationships**

This program fosters friendship and fellowship between temple units by inviting and hosting another unit.

**Hosha (Grateful Response)**

At the 3<sup>rd</sup> World Buddhist Women’s Convention in 1967 in Hawaii, *Hosha No Hi* was established to promote this Buddhist practice at temples or in the community.

**Care Day**

Care Day was created at the 12<sup>th</sup> World Buddhist Women’s Convention at Sao Paulo, Brazil in 2002 to extend Compassion and Assistance in Response to Elders (CARE).